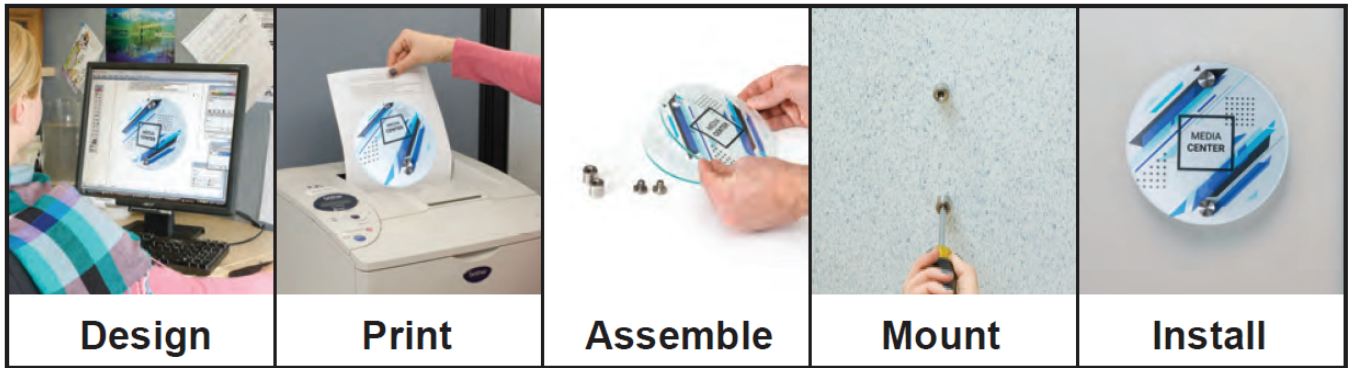


DESIGNCIRC2



This changeable door sign comes with 3 sheets each of printable clear or frosted film. Please note that the film is engineered for either photocopiers or laser printers, **NOT inkjet printers**.

Available in 3 formats, each template has a 6" x 6" circular field embedded in the file for you to input custom logos, graphics, and text. Once your design is completed we suggest printing a test on plain paper first. Hold up this test print against one of the supplied film sheets to visually inspect your layout against the lines of the scored field. This allows you the opportunity to make minor adjustments to your design before using up the supplied film.

We ask that you pay attention to the settings on your copier or laser printer with regards to margins and media type. Always print your design at 100%. **Do not** scale or select "fit to printer". By following these guidelines the chances for print film rejects will be minimized.

To remove the circle from the sheet, carefully fold along the perforations on each side several times until the edges separate.

Note: You can mount your sign vertical or horizontal. When designing make sure you orient your artwork on the template correctly.

